



# MemorialCare Long Beach Medical Center Miller Women's & Children's Hospital Community Benefit Grant Program

Melissa Biel, Biel Consulting, Inc.

June 22, 2022

*This Zoom Presentation is being recorded*

# Welcome!

Thank you for your interest in the Community Benefit Grant Program.

- Today's presentation is being recorded.
- Please mute your microphone.
- Please write your questions in the "Chat" feature. Questions will be answered following the slide presentation, time permitting.

# Grant Program Eligibility

## Who's eligible to apply?

- Long Beach Medical Center (LBMC) and Miller Children's & Women's Hospital (MCWH) provide financial support to local nonprofit and public health and human service organizations that serve vulnerable communities in our Los Angeles County service area.
- The grant projects must align with our Community Benefit priorities based on the Community Health Needs Assessment (CHNA).
- Only nonprofit, tax-exempt organizations and public agencies are eligible for funding.

# Criteria for Funding

- Benefit underserved community residents and address health disparities
- Relate to one or more priority health needs
  - Access to health care
  - Chronic disease
  - Mental health
  - Pregnancy and birth outcomes (MCH)
  - Preventive care
  - Substance use
- Funding should be used to address health equity and/or social determinants of health (housing, food, transportation, etc.)



# Health Equity

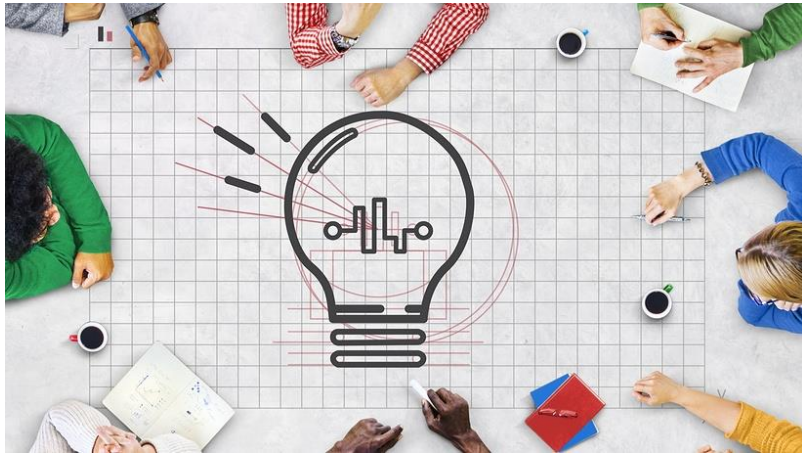
## Social Determinants of Health

**Health equity** is a principle meaning that “everyone has a fair and just opportunity to be as healthy as possible. This requires removing obstacles to health such as poverty, discrimination, and their consequences, including powerlessness and lack of access to good jobs with fair pay, quality education and housing, safe environments, and health care. Health equity means reducing and ultimately eliminating disparities in health and its determinants that adversely affect excluded or marginalized groups.”

**Social determinants of health (SDOH)** are the conditions in the environments where people are born, live, learn, work, play, worship, and age that affect a wide range of health, functioning, and quality-of-life outcomes and risks.

- Economic stability
- Education
- Health care
- Neighborhood and built environment
- Social and community support

# Measurable Objectives



## Your grant application must include measurable objectives

- The number of persons served
- The change in the number served compared to a previous period
- Change in health status
- Self-reported change in health knowledge or behaviors
- Change in utilization of services
- Benefits to the participants made possible by the program/project

# Project Budget

## Applications require a project budget

- How are you planning to spend the grant money you are requesting?
- It is acceptable to ask for operational support and/or project funding.
- Do not submit your organizational annual budget.



# Funding Conditions



- You will be notified in writing if funded.
- You must sign a letter of agreement.
- 50% of grant funds will be distributed upon receipt of signed letter of agreement.
- Mid-term and final grant reports are required.
- Remaining 50% of grant funds distributed upon receipt of progress report review and approval of progress. Report must demonstrate measurable outcomes have been met, per reporting criteria.



# Funding Amount

**LBMC and MCH will each distribute \$50,000 in grant funds**

We estimate 3-5 grants will be funded for each hospital.

Separate applications for each of the hospitals.  
Only apply for one.



# Timeline

- **July 5** – grant application process opens. Grant applications will be posted at [memorialcare.org/CommunityBenefit](https://www.memorialcare.org/CommunityBenefit) as a Word document
- **August 12** – grant applications due
- **August – October** – grant applications reviewed by staff and the Community Benefit Oversight Committee
- **End of October** – grant acceptance and declination letters sent
- **March 15, 2023** – mid-term grant reports due
- **July 20, 2023** – final grant reports due

# Review of Application

Questions?